



CRC 1502
DETECT

Newsletter



4th DETECT Retreat 2026
Shaping the future

Looking back and forward
Highlights and changes



Embracing the future of DETECT

Dear DETECT Community and DETECT-interested readers,

In May, we unfortunately received the news that the DFG did not approve our second funding phase. Although our research quality and evaluations were mostly rated as excellent, the final result is a heavy and unexpected blow for everyone involved. While it is natural to feel a deep sense of disappointment, this moment is also a powerful call to look ahead. We have built an exceptional research network and administration basis, and our work is far from over. Our Speaker elaborates on the details of this decision and our strategic path forward in a separate article in this newsletter.

So, what is happening within DETECT right now, and what are we focusing on? First and foremost, we are working on restructuring our coordination team to navigate the coming months. DETECT Phase I Coordinator **Frank Siegismund** will leave our CRC at the end of June. The entire team wishes Frank all the best for his future endeavours.

At the same time, a warm welcome to **Francis da Silva Lopes** and **Hana Mohammed**, who will join the Coordination Team as Scientific Coordinators on 1 July. Read more about the new set up of the Coordination Team in 'News from the Coordination Office'.

Just recently, on June 10 and 11, we gathered for our 4th DETECT Retreat in **Bad Breisig**. This meeting was highly productive, as we discussed concrete options for new complementary, synergistic initiatives to carry our research vision forward. A brief review of the retreat alongside some impression photos can be found further down in this newsletter.

Finally, we bid farewell to our PI **Sara Bauke** who has accepted a call to the University of Rostock. We wish her all the best in her new position.

Furthermore, we remain highly active on the international stage, highlighted by our strong presence at the EGU, where numerous DETECT contributions were showcased. In addition, our DETECT colleague **Till Fohrmann** is invited as an expert to the popular educational series *Checker*, produced on behalf of Bayerischer Rundfunk to explain the basic processes of climate change to their target audience (ages 6–10). We look forward to the broadcast date!

Additionally, our research infrastructure continues to grow: **Farzane Mohseni** highlights the success of our DETECT GeoNetwork Data Portal in a dedicated article below, showcasing how we live the FAIR data principles daily.

Amidst these developments, we want to take this opportunity to say a heartfelt *thank you and goodbye* to **DE-I-TECT**, our equal opportunity team, which is concluding its valuable



work for the CRC with the start of the phase-out funding. Their honest reflections and highlights after four years of DE-I-TECT are reported in a separate article of this newsletter.

After all: The Speakers and Coordination Team say thanks to everyone in DETECT for your continued dedication, resilience, and hard work.

Let's seize this moment to channel our collective energy, explore new options, and actively shape the next chapter of DETECT together!

Enjoy reading!

Sincerely,

Jürgen Kusche
Speaker

Silke Hüttel
Co-Speaker

Harry Vereecken
Co-Speaker

Frank Siegismund
Scientific Coordinator

Dorothee Berkle-Müller
Administrative Coordinator

Mixed Feelings

by Jürgen Kusche

There is no denying: DFG's decision to discontinue funding of DETECT came as a low blow. While the panel evaluation in January 2026 was meticulously well-prepared and showed strong team performance, and we had many excellent discussions with the international review panel, we also perceived a certain degree of hesitation or even biasedness among individual participants.

The overwhelming share of projects was ranked very high, and the overall program was seen as *"being of high research quality, unique but also challenging, high-risk high-gain, with the proposed collaboration with African partners very good"*. Yet two projects and in total three PhD positions were not recommended for funding and as a result, in a crowded and tense competition in the light of a limited and increasingly tighter budget, DETECT-II was not decided for funding by DFG's senate commission. While a budget cut of about 1 mio € is quite common, we knew in advance that project rejections could tip the balance to the wrong side.

Despite these gloomy feelings, when we look back I think we can be extremely proud on DETECT's achievements. There is currently an unprecedented wave of PhD graduations within the DETECT projects. The level of collaborations across the participating groups was never higher in the past, and new collaborations and spin-off projects with West African partner groups have evolved. As of today (May 27, 2026), Scopus lists 120 DETECT publications with in total >1600 citations. Social media outreach has multiplied over the last year and DETECT visibility is rising. All in all, DETECT's first phase can be called extremely successful.

This leaves us with the question, what's next now that the obvious path has been blocked.

First of all, most projects will receive a phase-out funding which will allow us to continue with DETECT research for another year. Many of our PhD students will thus have the opportunity to explore DETECT research as a postdoc, and make full use of the excellent modelling and data infrastructure that was built over the past four years.

In the coming weeks, we will explore the possibility of resubmitting a new application to DFG with those projects recommended for funding. This has been confirmed as a viable way forward already both by DFG and by the rectorate of the University of Bonn. While this path will begin with a comprehensive pre-proposal, it also provides us with a valuable opportunity to build directly on our strong foundations and launch a highly competitive new initiative.

During the retreat in Bad Breisig, we will also discuss complementary and synergistic initiatives. It is clear thus that the focus during the upcoming year will be on synthesizing our findings, establishing further collaborations, increasing DETECT's visibility further, and writing cross-project and -cluster papers on the state we achieved and how far we can address the DETECT central hypothesis, i.e. address the land and water use effect on continental climate. And lastly, we are committed to actively preserving the heritage and structural achievements of DETECT to the benefit of our entire community; it has already been proposed to us to establish a cross-faculty centre within the University of Bonn which would allow integrating DETECT colleagues external to the University.

So work needs to be done.

Turning challenges into opportunities: DETECT Retreat shapes the future

by Dorothee Berkle-Müller



4th DETECT Retreat Bad Breisig

source: CRC 1502 DETECT

Despite the recent setback regarding their second phase funding proposal, the **DETECT** collaborative research centre is moving forward with sharp focus and shared determination.

At a dynamic two-day retreat in Bad Breisig by the Rhine, the team gathered to evaluate their milestones, integrate fresh scientific perspectives, and lay the groundwork for our upcoming reapplication (maybe **DETECT+**).



source: CRC 1502 DETECT



source: CRC 1502 DETECT

Here are the highlights from our two days of intense collaboration:

Strong Institutional Support & Cluster Reviews

The retreat kicked off with a vital strategic discussion with the Rector of the University of Bonn, **Prof. Dr. Michael Hoch**, who reaffirmed the university's full backing for the CRC's next steps.

Inside the seminar rooms, Clusters A through D as well as the 4 Z-Service Projects conducted deep dives into the lessons learned from the first funding period, directly translating them into concrete work plans for the upcoming year.

Networking & International Synergy

Science thrives on informal exchange. During the "Walk & Talk" session along the Rhine-Burgen-Hiking way, the DETECT staff connected across disciplines to spark new ideas.



Discussion with the Rector of the University of Bonn, Prof. Dr. Michael Hoch

source: CRC 1502 DETECT



Walk & Talk Session

source: CRC 1502 DETECT

Day two expanded this collaborative spirit globally, featuring dedicated breakout sessions on the ongoing cooperation with **West Africa** and the future integration of the Terrestrial Systems Modeling Platform (**TSMP**).

Science-Policy Impact & New Horizons

A key focus of the plenary sessions on day two was synthesis—specifically, turning their data into impactful publications and strengthening the **science-policy engagement**. The team was also thrilled to get to know three newly appointed professors – **Marc Rußwurm**, **Aiko Voigt**, and **Matthias Garschagen**. Their latest research, a valuable new expertise to the network, was presented by Jürgen Kusche and Silke Trömel.



The Way Forward

The retreat concluded with clear strategic options for the **DETECT+** reapplication, alongside plans for new, complementary joint initiatives.

The next step will be to coordinate framework conditions with DFG and establish working groups, a fixed timeline, and renewed energy.

Conclusion: The DETECT community is ready for the next chapter!

New Leadership Team Elected at the General Assembly

by Dorothee Berkle-Müller

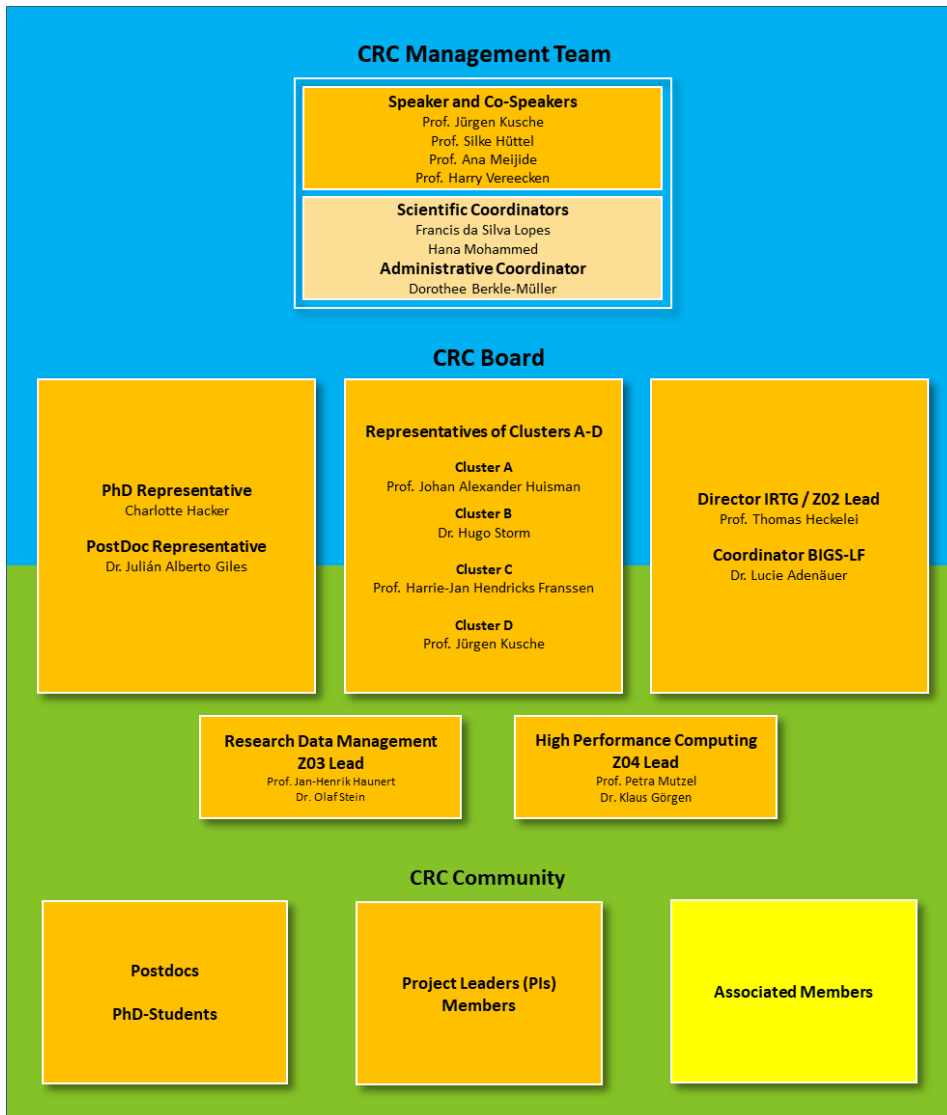
At the General Assembly on June 25, 2026, the members of the CRC1502 DETECT elected the new Speakers' Team, Executive Board, and PhD/Postdoc Representatives. Most members were re-elected, ensuring continuity and reaffirming the collaborative leadership of the CRC for the coming term.

Prof. Jürgen Kusche was re-elected as Speaker, while Prof. Silke Hüttel and Prof. Harry Vereecken were confirmed as Co-Speakers. Prof. Ana Meijide was elected as a new Co-Speaker, joining the leadership team. The Executive

Board includes after the election the Cluster Speakers Prof. Sander Huisman (Cluster A, re-elected), Dr. Hugo Storm (Cluster B), Prof. Harrie-Jan Hendricks Franssen (Cluster C, re-elected), and Prof. Jürgen Kusche (Cluster D). Charlotte Hacker was re-elected as PhD Representative, and Dr. Julian Giles was re-elected as Postdoc Representative.

We warmly congratulate all elected representatives and thank them for their continued dedication and commitment to DETECT.

With the new leadership election and the new set up of the Coordination Team on 1 July, the organisational chart will then be as follows:



Farewell and thanks to Sara Bauke

by Frank Siegismund

Effective April 1, 2026, Prof. Dr. Sara Bauke was appointed to the faculty of the University of Rostock. She will assume the professorship in "Soil Sciences" in the Faculty of Agricultural, Civil, and Environmental Engineering. Best wishes, Sara, and good success!



Prof. Dr. Sara Bauke

source: [Uni Rostock](#)



AG Bodenwissenschaften

source: [Uni Rostock](#)

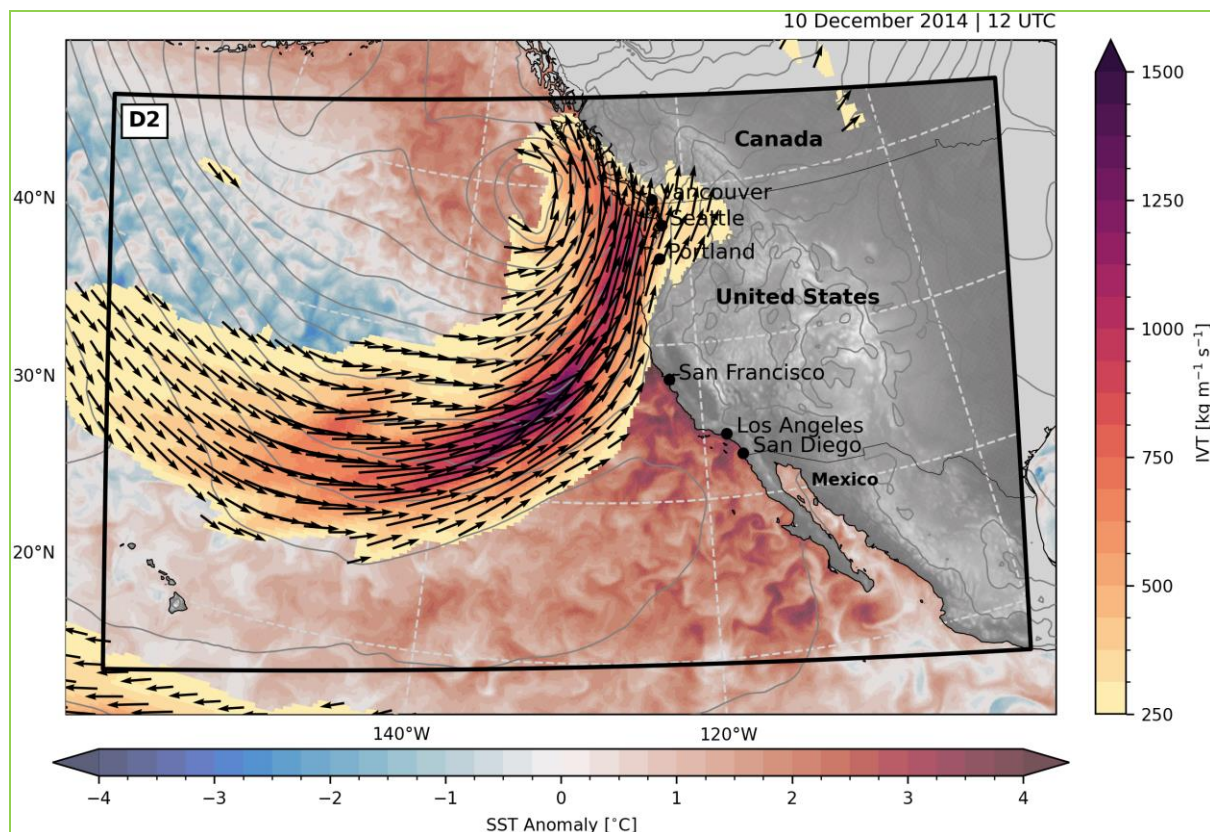
Intensification of Atmospheric Rivers by Marine Heatwaves

Multi-Scale Air-Sea Interaction and Downstream Effects on Coastal and Inland Climate

by Christoph Renkl (University of Bonn), Hyodae Seo (University of Hawai'i, Mānoa), Arthur J. Miller (Scripps Institution of Oceanography, UCSD)

Extreme precipitation along the west coast of North America is often associated with atmospheric rivers (ARs), fueled by evaporation from the ocean. When ARs interact with persistent warm sea surface temperature (SST) anomalies related to large-scale marine heatwaves (MHWs), they can form compound extreme events with amplified hydrological impacts. This study, funded by the U.S. National Science Foundation (NSF), quantifies how MHWs influence the intensity and hydrological impacts of landfalling ARs through thermodynamic air-sea interactions.

In 2014, multiple ARs interacted with a MHW in the Northeast Pacific, commonly referred to as "The Blob". Coupled multi-ensemble, high-resolution regional coupled ocean-atmosphere simulations show that the anomalously warm SSTs led to intensified landfalling ARs and substantially increased coastal precipitation, particularly over drought-vulnerable regions of California. Moisture-budget diagnostics reveal that this amplification is primarily a thermodynamic response related to enhanced evaporation in the presence of a MHW providing an anomalous moisture source.



Landfalling atmospheric river (AR) on 10 December 2014. Vertically integrated water vapor transport (IVT, $\text{kg m}^{-1} \text{s}^{-1}$; vectors at every 4th grid point and shading, only values $>250 \text{ kg m}^{-1} \text{s}^{-1}$ are shown) and sea level pressure (SLP, hPa; contours in increments of 4 hPa) based on the ERA5 atmospheric reanalysis. Sea surface temperature anomalies ($^{\circ}\text{C}$; background shading) relative to the 2005–2014 daily climatology based on the GLO-RYS12v1 ocean reanalysis. The black outline indicates the extent of the coupled model domain.

source: Christoph Renkl

This additional moisture is picked up by ARs, augmenting IVT and amplifying AR intensity prior to landfall.

These findings suggest a thermodynamic pathway linking MHWs and ARs, with important implications for compound ocean-atmosphere extremes in a warming climate. With observational records and climate projections indicating that both ARs and MHWs are increasing in frequency and amplitude, the likelihood that they interact is increased, thereby leading to a

growing potential for MHWs to precondition the atmosphere for more intense AR events.

A manuscript of this study is currently under review at Scientific Reports.

This article is a brief summary of a presentation given by Christoph Renkl on May 6 as part of the Land and Climate Seminar. For the DETECT team, this presentation is available for streaming on the internal pages of www.sfb1502.de.

DETECT Data Portal: Expanding Access to Environmental Research Data

by Farzane Mohseni

The [DETECT GeoNetwork](#) Data Portal has become a central component of the CRC 1502 DETECT research infrastructure. The portal provides a comprehensive platform for the management, visualization, and dissemination of research data across all DETECT subprojects. Designed according to the FAIR data principles, ensuring that data are Findable, Accessible, Interoperable, and Reusable, the portal supports

transparent and sustainable research data management throughout the consortium. It enables researchers to securely document, publish, discover, and access observational datasets as well as numerical model outputs generated within DETECT.

To date, the platform catalogues more than 80 independent datasets and over 10 associated



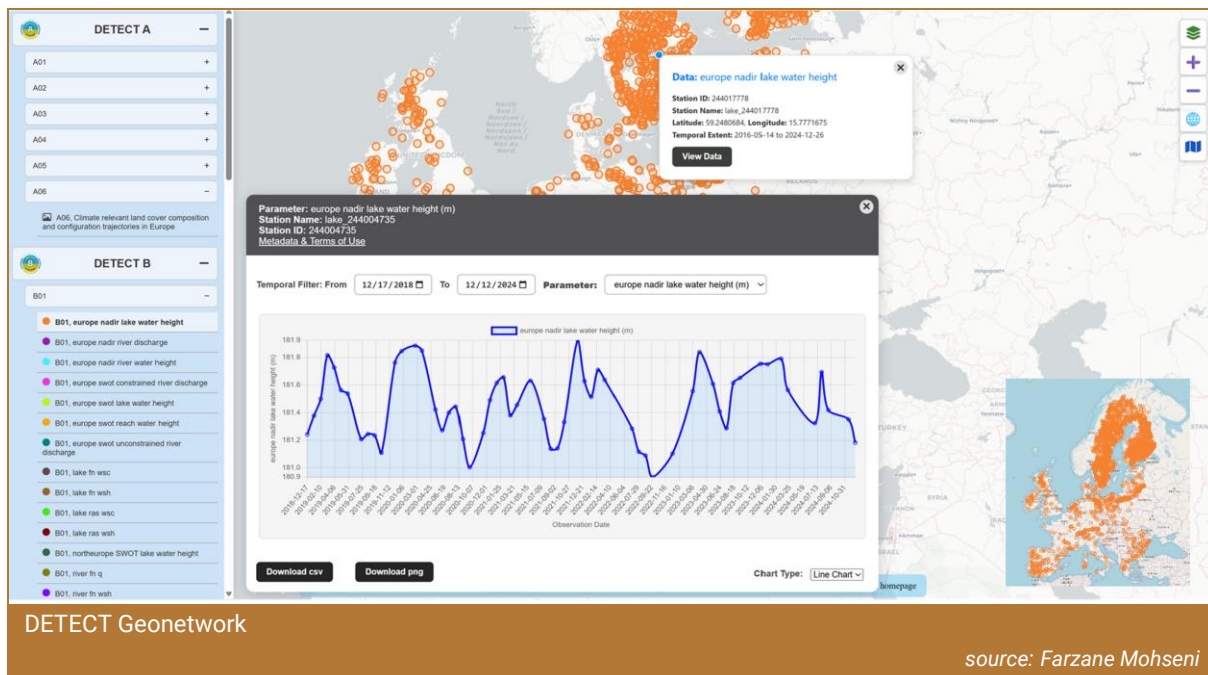
DETECT Geonetwork

source: Farzane Mohseni

data services, many of which are linked to DOI references and external repositories. The portal serves as a central metadata repository for projects from all research areas within DETECT, reflecting the interdisciplinary scope of the CRC.

One of the key developments of the platform is the integration of interactive visualization functionalities. Researchers can now explore datasets directly within the portal using map-based interfaces and a growing library of visualization tools. These include support for raster and vector datasets, time-series visualization, and interactive geospatial representations, significantly improving data accessibility and usability for both project members and external users.

The GeoNetwork infrastructure was developed by the DETECT-Z03 data management team at the University of Bonn under the leadership of Prof. Dr.-Ing. Jan-Henrik Hauernert and Dr. Farzane Mohseni. The portal supports compliance with research data standards and guidelines established by the German Research Foundation (DFG) and the European Union (EU), while also promoting long-term data stewardship and scientific collaboration. With the continuous growth of datasets, services, and visualization capabilities, the DETECT GeoNetwork portal is increasingly becoming an essential digital infrastructure for environmental research within CRC 1502 DETECT.



DETECT contributions at EGU 2026

Vienna, Austria

by Zulfikar Nadzir



EGU entrance

source: CRC 1502 DETECT

The European Geosciences Union General Assembly 2026 brought together a large international geoscience community in Vienna and online, with more than 22,000 registered participants, over 20,000 presentations, and more than 1,000 scientific sessions. Within this broad setting, CRC 1502 DETECT was represented by contributions across several projects and research themes.



Welcome to the EGU26

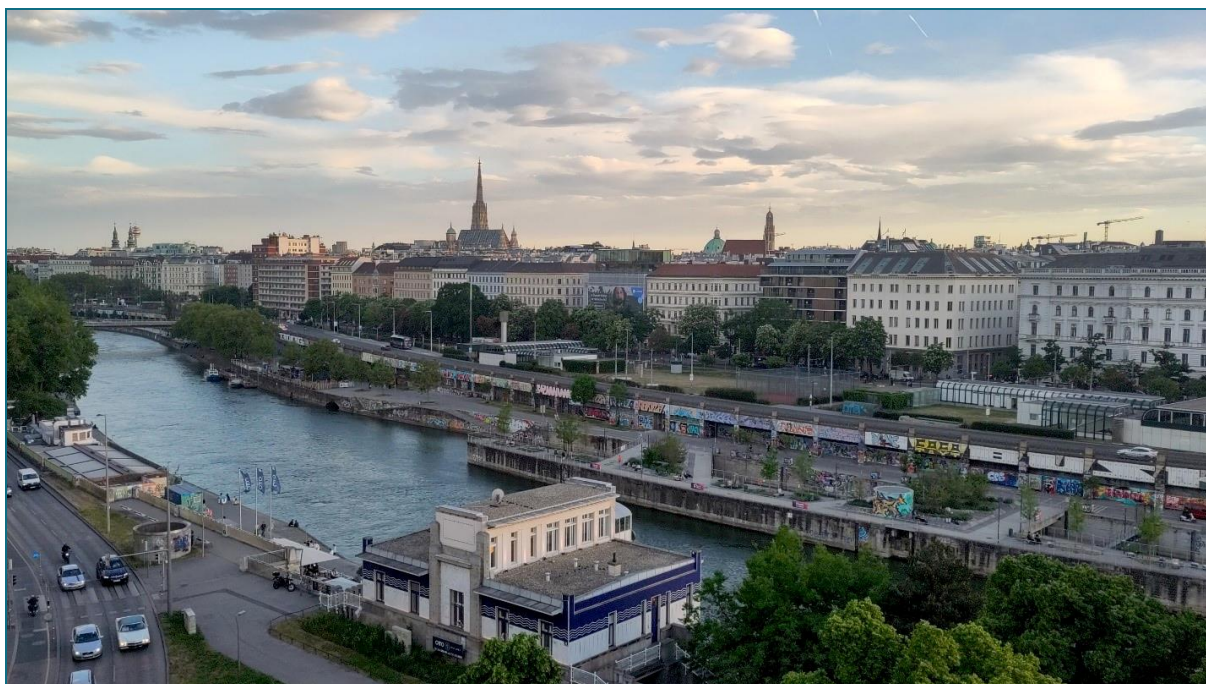
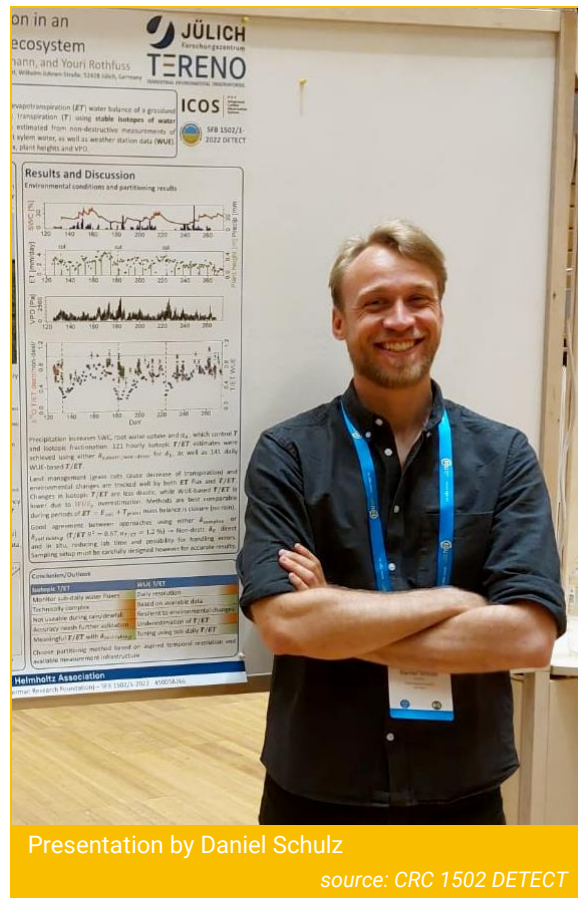
source: CRC 1502 DETECT

The collected DETECT-related contributions covered a wide range of topics central to the CRC's research agenda: evapotranspiration partitioning, plant and soil hydraulic parameters, land-surface modelling, terrestrial water storage reconstruction, continental water mass balance, hydrological signals in gravimetry, global gravity-field representation, and future satellite gravity missions such as NGGM and MAGIC.

Reports on recent Conference Visits



The contributions included oral presentations, posters, and a PICO presentation by researchers from the University of Bonn and Forschungszentrum Jülich. Together, they show how DETECT research connects field observations, Earth observation, hydrological and land-surface modelling, crop and plant-water processes, and geodetic monitoring to better understand land-water-climate interactions.



Vienna

source: CRC 1502 DETECT

**Reports on recent Conference Visits**

List of EGU 2026 Contributions							
No	Presenter Name	Project	Institution	Presentation/ Poster Title	Session	Format	Link to the EGU Abstract
1	Daniel Schulz	A03	FZ Jülich	Partitioning of Evapotranspiration at hourly resolution in a temperate grassland using a mobile water isotope laboratory	HS10.7	Poster	Link
2	Benjamin D. Gutknecht	D07	UB	Assessment of continental water mass balance components 2003–2020 over EURO-CORDEX in the DETECT LAMBDA framework	HS2.5.2	PICO	Link
3	Charlotte Hacker	C03	UB	Reconstructing terrestrial water storage anomalies based on climate data and pre-GRACE satellite observations	G3.1	Oral	Link
4	Annika Nitschke	C03	UB	Improving the representation of water, energy and carbon cycles in land surface modelling: Assimilation of MAGIC TWSA data	G3.1	Poster	Link
5	Alicia Daubenspeck	C03	UB	Disentangling Hydrological Signals in Superconducting Gravimeter Time Series with High-Resolution Models	G4.1	Oral	Link
6	Bibi S. Naz	C04	FZ Jülich	Optimizing soil and plant hydraulic parameters in eCLM using multi-variable data assimilation of soil and vegetation observations	BG9.1	Oral	Link
7	Jhon David Restrepo Berrío	C03	UB	Investigating Hybrid Spherical Harmonic–Neural Network Models for Efficient Functional Approximation of the Global Gravity Field Representation	G1.2	Poster	Link
8	Julia Pfeffer	-	UB	Studying the Impact of the NGGM and MAGIC future satellite gravity missions for scientific applications and operational services	G4.2	Oral	Link
9	Juan C. Baca Cabrera	C02	FZ Jülich	Seasonal shifts in the sensitivity of plant hydraulic parameters controlling ecosystem water and carbon fluxes in eCLM	BG1.11	Poster	Link

A heartfelt farewell and honest reflection:

The Team says thank you and goodbye

by Silke Hüttel and Dorothee Berkle-Müller

Dear Colleagues, dear CRC Community,

After four intensive years, the first phase of DETECT is coming to an end – and with it, for now, our journey as the DE-I-TECT team. For us, it is time to say goodbye to you but not to the DE-I-TECT spirit!

An important chapter closes for us with the start of the phase-out funding. Looking back on the past four years, we do so with a mix of pride and honest reflection.

Our Achievements – and the Hurdles

Equality and diversity work in academia is a marathon, not a sprint. Over the past years, we invested an immense amount of energy into firmly anchoring diversity within the CRC.

Our key milestones include:

- **Structural Foundation:** Establishing the DE-I-TECT programme, homepage, inclusive language, concrete measures and guidelines to make daily life at the CRC fairer and more inclusive.
- **Visibility:** Launching targeted formats that provided essential impulses for equal opportunities.

Some special Highlights:

- Lectures by Prof. Marike van den Brink and Prof Ute Klammer, both highly renowned Diversity researchers
- Assertiveness and strong performance trainings with Sabine Mariss
- Bystander to Upstander Workshop with Sabine Mariss
- Unconscious biases luncheons with Dr. Imke Lode
- Co-organised session at 2025 EAAE with renowned international diversity scientists
- Appr. 15 funding measures in line with DFG's principles to foster equal career opportunities among underrepresented groups
- Nominated for 2026 Marie-von-Linden Award of UBN by the DETECT community

Our path was often uphill and shaped by uncertainties. We experienced firsthand how difficult it can be to gain true recognition and motivation for this essential work. It was frequently a tough battle to recruit participants for our workshops and to spark active engagement. Equality is often labeled as "important," but in the stressful routine of every-day business, the necessary time is too often lacking.



This is precisely why we are proud that we never backed down as a team and continued to push these heavy doors open.

This is thanks to you, all of those who took part in our events, engaged in critical but always respectful dialogue with us, and supported our mission.

We sincerely hope that the seeds we planted will continue to grow with new impulses and fresh energy in all places where DETECTs are, or will become active and take responsibility.

Yours, **DE-I-TECT** Team



Silke and Dorothee

DETECT at ‚Checker Tobi‘

by Frank Siegismund

The editorial team behind the popular children’s educational series **Checker**, produced on behalf of Bayerischer Rundfunk, has reached out to DETECT with a request regarding climate change. For their “Climate Change Check,” they are looking for an expert who can explain the basic processes of climate change to their target audience (ages 6–10): Why is our planet getting warmer? What impact does this have on

the weather and extreme weather events? Why do we humans find it so difficult to protect the climate? The filming day is scheduled for the first or second week of June.

Till Fohrmann will participate as expert from our team. We will keep you updated on the filming and the broadcast date!



Publications based on integrations on HPC cluster Marvin

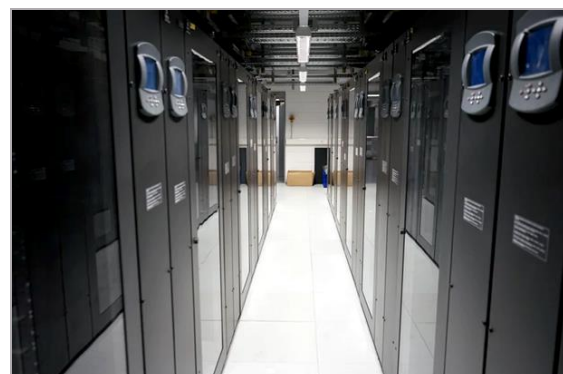
by Frank Siegismund

The HPC team of University of Bonn is currently in the planning phase of a successor to the HPC cluster Marvin. For this they need a list of publications for which Marvin is used.

Please send the list of publications to them at hpc@uni-bonn.de, including preprints that are planned to be published. In any paper for which any of their clusters is used, please acknowledge its use, and where appropriate, acknowledge HPC/A Lab and/or the HPC team at The University IT and Data Center (Hochschulrechenzentrum, HRZ) of the University of Bonn.

More information on this, including suggestions can be found [here](#).

Thank you for your cooperation!



Marvin: State of the Art Tier 3 Cluster

source: Lea Hataj / Uni Bonn

Make your publication public!

by Dorothee Berkle-Müller

As of the end of May 2026, 140 papers with DETECT participation and 61 with DETECT first authors have already been published. Congratulations! In addition, many papers on the results of DETECT-I are currently in preparation or under review.

Here are some tips on how to reduce publication costs and ensure your papers reach the widest possible audience.

The [Open Access Service Center at the University Library of Bonn](#) supports you in publishing your research openly and making it visible. They advise you on publication channels, funding, and licenses, and offer specific services related to open-access publishing. In addition, they provide information on institutional and national developments and make central services and infrastructure available.

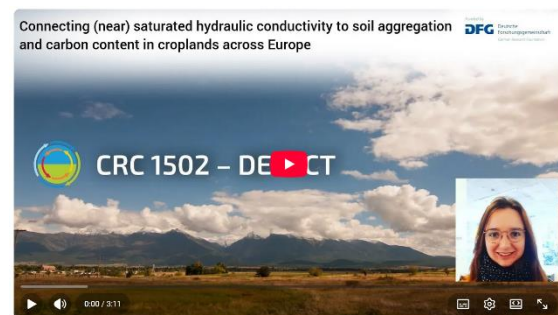


<https://www.open-access.uni-bonn.de/en>

In particular, members of the University of Bonn can apply for reimbursement of the costs of open-access publications if these follow recognized quality assurance procedures such as peer review. The journal must be listed in the [DOAJ](#) or [JCR](#).

To make publications visible to the community, all authors should use the social media platforms supported by the DETECT coordination team.

Short videos for 11 papers have already been posted on the DETECT YouTube channel in the "My paper in 140" series and are linked via sfb1502.de. The technical equipment for video recording is available at the coordination office. The room can be reserved for practice sessions and for the actual recording. More information can be found on the internal pages of sfb1502.de. For reserving the room, questions about the format, and assistance with filming please contact [Sascha Wüst](#).



https://www.youtube.com/watch?v=i5nf00fq_MY

All publications with DETECT first authors should be announced on both [LinkedIn](#) and [Bluesky](#). The visibility of the LinkedIn account has steadily increased thanks to Zulfikar Nadzir's ongoing support. It already has more than 500 followers. For assistance with creating the posts and ultimately publishing them, please contact [Sebastian Striethorst](#).

Farewell to Frank

by Jürgen Kusche



source: Frank Siegismund

Our scientific coordinator Frank Siegismund will leave DETECT end of June 2026. Frank studied mathematics in Darmstadt, completed a PhD in oceanography at the University of Hamburg, and held scientific positions in Hamburg, Bergen (Norway) and at TU Munich.

He was involved in writing the DETECT preproposal from the early beginnings in 2021, and took over the scientific coordinator position once funding was approved, holding a dual affiliation at Uni Bonn and FZ Jülich. Frank has significantly contributed to bringing DETECT into existence and running the CRC.

We sincerely thank Frank for his dedication during DETECT I and wish him all the very best and much success for his future professional and personal endeavours.

Farewell and Thank You, Zulfikar!

by Dorothee Berkle-Müller

As our summer term progresses, we must bid a fond farewell to Zulfikar Nadzir. Zulfikar will be leaving us on July 1st to return to his home country of Indonesia, where he will be focusing on completing his doctoral thesis.

Many of you know Zulfikar from his early days with DETECT, where he supported our coordination team as a student assistant. During the past 12 months, he has served as our Outreach Coordinator, a role in which he has been instrumental in taking our external visibility to the next level.

While we are excited for him to take this next major step in his academic career in Indonesia, we are acutely aware of the significant gap his departure leaves in our team. We will deeply miss his dedication, expertise, and personal presence.

We wish Zulfikar all the best, continued success with his dissertation, and a safe journey home. Terima kasih banyak, Zulfikar, and we hope our paths cross again soon!



source: Zulfikar Adlan Nadzir

New Team Setup in DETECT Coordination Office

Familiar faces in new roles

by Dorothee Berkle-Müller

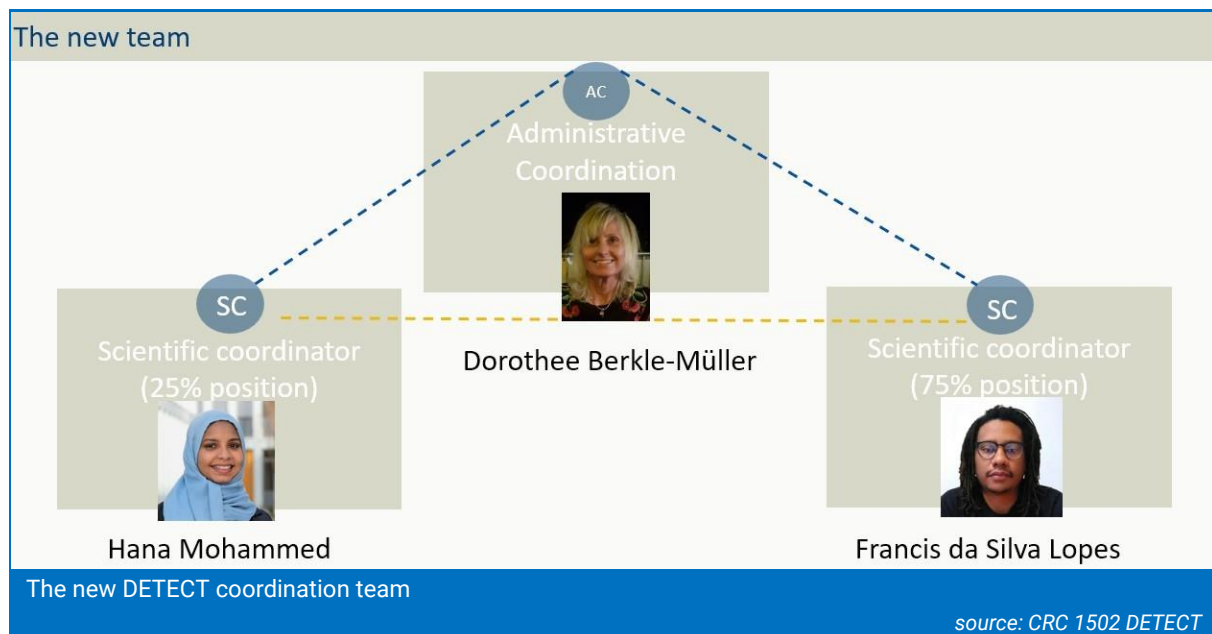
During the Retreat in June the new team setup was introduced:

Francis da Silva Lopes

well known from his doctoral work in D02 during phase I

Hana Mohammed

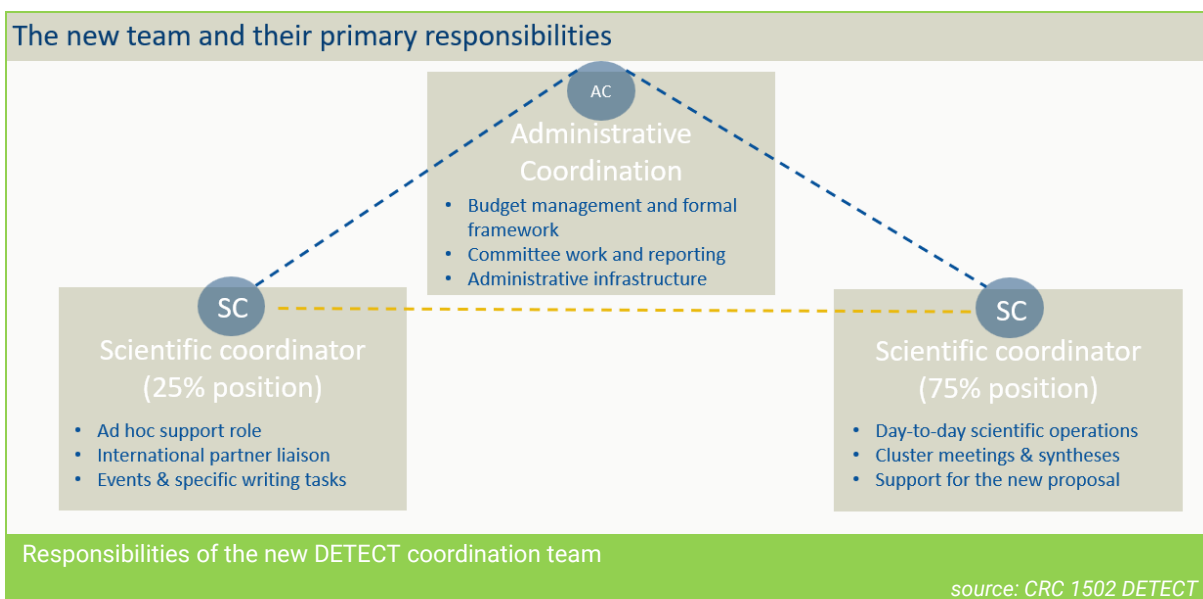
well known from CESOC and her coordination work with our partners from Africa



On July 1st, they will begin sharing the role of Scientific Coordinator, working alongside Dorothee Berkle-Müller, the Administrative Coordinator.

Together, the three of them plan to streamline processes, and give scientific research in DETECT the best possible support.

During the Retreat they shared a quick overview of how they plan to assume their roles and also invited the community in an interactive part, to provide their ideas and requests for best possible future practice.



The detailed division of roles shall be published on the internal pages in July, and the results of the survey conducted during the retreat will be shared in the first „new“ DETECT JF, scheduled on 30 July.

The team’s main focus is on: a commitment to transparency, personal availability and a culture of open dialogue.

Let’s just get started!

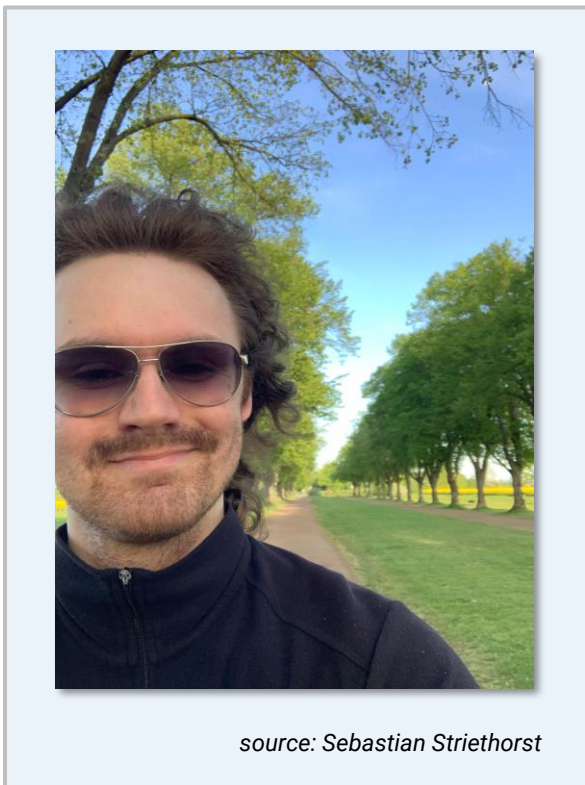
DETECT coordination staff

Introduction of Sebastian Striethorst

by Dorothee Berkle-Müller

Starting 1 June 2026, Sebastian Striethorst will be supporting DETECT coordination as a student assistant. Sebastian has already gained experience as a student assistant in UBN administration. After Zulfikar has left the CRC, Sebastian will be involved in public relations work, and among others support DETECT Coordination in everyday business, event preparation and continuous website updates.

For any texts to be updated at <https://sfb1502.de> or posts on BlueSky please do not hesitate to get in contact with [Sebastian](#).



Sebastian Striethorst – Supporting the DETECT Coordination Office- since June 2026

Profile:

Sebastian was born 2002 in Bonn and raised in Berlin. He started studying history and philosophy in 2020 at the University of Bonn. For his bachelor thesis he investigated discourses about Internationalism and Militarism within the German Social Democratic Party at the beginning of the 20th century. In 2024 he started working within the university administration as a student assistant and did event management and website support for the Bonn Graduate Center. Although his academic expertise lies in different fields than what the CRC1502 is researching on, he is nevertheless excited to contribute to DETECT with his experience in research management and administration. In his spare time, he enjoys riding his bicycle and playing board games.

**Recent and Upcoming Events**

23 – 25 June 2026
Carcavelos, Portugal

IAAE Annual Conference 2026

The IAAE Annual Conference 2026 brings together leading researchers, academics, and practitioners in applied econometrics from around the world. This prestigious event offers a unique platform to present cutting-edge research, exchange ideas, and foster collaboration across disciplines.

This year's conference will feature keynote addresses from world-renowned economists, parallel sessions covering diverse topics in econometrics, and networking opportunities designed to facilitate meaningful academic connections.

More information [here](#).

6 – 9 July 2026
Stuttgart, Germany

2026 Pan-GLASS Conference

Back to the Drawing Board: From Fundamentals to Improved Models of the Coupled Land-Atmosphere System.

Pan-GLASS 2026 will bring together experts on earth system and weather research, soil and vegetation processes, surface fluxes, planetary boundary layer transport processes, clouds and precipitation, and machine learning. At the conference, observationalists, theoreticians, and modelers will join to discuss the key issues of land-atmosphere science. The program will include all aspects and methods of modeling and observing land-atmosphere interactions across different temporal-spatial scales: e.g., from diurnal to decadal; from ground-based measurements to satellite data; from large-eddy simulations to global earth system models.

More information [here](#).

20 – 24 July 2026
Hamburg, Germany

km-Scale Global Modelling Summit 2026

Welcome to the km-scale Global Modelling Summit 2026!

WarmWorld and related projects from across Europe and the world are organizing this summit to take stock of the rapid and exciting scientific and technical developments associated with the development of the next generation km-scale global models.

The summit will bring together experts from the domains of modelling, observations, high performance computing, human and environmental impacts, and AI-assisted work flows, all of whom are building on the unique capabilities and technological profile of the km-scale models.

More information [here](#).

12 – 14 August 2026
Maceió, Brazil

EarthSym - 1st International Symposium on Earth System Modeling

Pre-event short courses 10 – 11 August

Focus: Integration between observation, theory, and simulation covering the atmosphere, oceans, land surface, hydrosphere, and cryosphere.

The 1st International Symposium on Earth System Modeling (EarthSym) will serve as an international forum for discussion, collaboration, and exchange of ideas on the numerical representation of the Earth system and its interacting components. The event highlights the complex connections among the atmosphere, oceans, land surface, hydrosphere, and cryosphere, and how these interactions influence weather, climate, and environmental variability across spatial and temporal scales.

More information [here](#).

**Recent and Upcoming Events****6 – 10 September 2026****Bochum, Germany****International Conference of the German Society for Plant Sciences (DBG)**

The International Conference of the German Society for Plant Sciences will bring together researchers from all areas of plant science to share new insights, foster collaborations, and celebrate the diversity of plant research. It is scheduled to take place in Bochum, Germany, from 6th to 10th September 2026 and will be organized by Professor Christopher Grefen and his team at Ruhr University Bochum, Germany.

More information [here](#).**6 – 11 September 2026****Utrecht, The Netherlands****EMS Annual Meeting 2026**

The 2026 Annual Meeting of the European Meteorological Society will take place as a hybrid event at the Jaarbeurs conference center in Utrecht, The Netherlands & online from 6 to 11 September 2026.

A programmatic focus of the 2026 Annual Meeting that reflects particular interests and activities of the host institutions will be on the challenges for the broad European meteorological infrastructure posed by climate change: To develop tools for early warnings and societal preparedness in a changing European climate.

More information [here](#).**22 – 25 September 2026****Lüneburg, Germany****CLM Assembly 2026**

General Assembly of the CLM-Community, organized by the Helmholtz-Zentrum Hereon.

More information [here](#).**7 – 11 December 2026****San Francisco, California****AGU annual meeting**

Every year, AGU's Annual Meeting convenes over 25,000 attendees from 100+ countries to share scientific findings and make connections. Researchers, scientists, educators, students, policymakers, exhibitors, journalists and communicators attend AGU's Annual Meeting to better understand our planet and environment, and our role in preserving its future. It is a results-oriented gathering rooted in celebrating and advancing positive individual and collective outcomes.

Mid-June - Abstract submissions open. Session proposal acceptance notification emails sent.

5 August - Abstract submissions close.

Mid-August - Attendee registration and housing opens.

More information [here](#).**24 – 26 May 2027****Carcassonne, France****NGGM Science and Applications Workshop 2027**

The event will build on the success of the 'MAGIC Science and Applications Workshop 2023', co-organised by ESA and NASA in Assisi, Italy. Join us in the scenic medieval city of Carcassonne to explore the new scientific frontiers the Next Generation Gravity Mission (NGGM) and the Mass-Change and Geosciences International Constellation (MAGIC) can open. Please save the date and visit the website for updates with further information to be provided soon.

More information [here](#).



Recent and Upcoming DETECT Land and Climate Seminars

by Frank Siegismund

The Land and Climate Seminar, featuring presentations by our team members and cooperation partners, is once again reflecting the multifaceted spectrum of our research at DETECT in the current semester.

DETECT Land & Climate Seminar		Mondays at 10:15 (zoom-link)
3 July	Peter Bauer-Gottwein (DTU - Technical University of Denmark): Unoccupied airborne systems (UAS) and Satellite Hydrometry – the “new normal” in river monitoring and management?	

Activities within DETECT

All-cluster meetings scheduled for 2026:

Please enter in your calendar!

25 June, 10:00-11:30, online
[General Assembly](#)

30 July, 13:00, hybrid
[DETECT Jour Fixe](#)

11-12 November, lunch to lunch, hybrid
[DETECT All Status Meeting](#)

Publications

Find more publications published on our website:

<https://www.sfb1502.de>



**UNIVERSITÄT
HEIDELBERG**
ZUKUNFT
SEIT 1386



UNIVERSITÄT **BONN**



**GEORG-AUGUST-UNIVERSITÄT
GÖTTINGEN** IN PUBLICA COMMODA
SEIT 1737



JÜLICH
Forschungszentrum

Deutscher Wetterdienst
Wetter und Klima aus einer Hand



Impressum

Publisher

Collaborative Research Centre (SFB)
1502 - DETECT

Contact

Collaborative Research Centre (SFB)
1502 – DETECT
Kekuléstr. 39a
53115 Bonn
+49 228 73-60585

dberklem@uni-bonn.de
siegismund@geod.uni-bonn.de
<https://www.sfb1502.de>

Editors

Dorothee Berkle-Müller
Zulfikar Nadzir
Frank Siegismund

Graphic design and layout

[Polywebster](#)

SFB1502 – DETECT is a Collaborative Research Center run by the University of Bonn and participating institutions FZ Jülich, the Universities of Heidelberg and Göttingen, and the DWD, and funded by the Deutsche Forschungsgemeinschaft (DFG, German Research Foundation) – SFB 1502/1-2022 - 450058266.